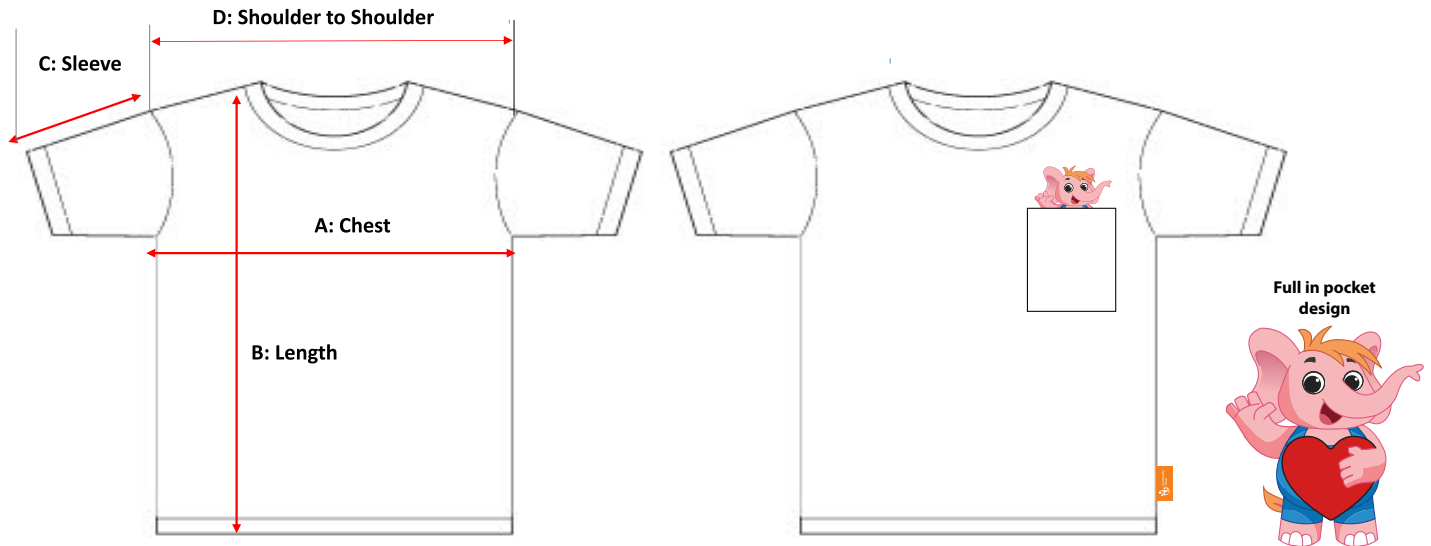


Measurement Chart

STYLE: Children Round Neck Tee

	Measurements (in inches) -Mens	S	M	L
A	Chest (1" below armpit)	24"	26"	28"
B	Body Length (fm HPS)	18"	19"	20"
C	Short Sleeve Length	5 1/2"	5 6/8"	6 2/8"
D	Shoulder To Shoulder	10 2/8"	10 6/8"	12"



STYLE: Adult Round Neck Tee

	Measurements (in inches) -Mens	XS	S	M	L	XL
A	Chest (1" below armpit)	36"	38"	40"	42"	44"
B	Body Length (fm HPS)	26"	27"	28"	29"	30"
C	Short Sleeve Length	7.5"	8"	8.5"	9"	9.5"
D	Shoulder To Shoulder	15.5"	16.5"	17.5"	18.5"	19.5"

